

**2017** *Product & Solutions Catalog*

# Why We Are Different



## Best Total Value

We offer the best value for your barcode needs: Competitive prices, premium quality, and top-of-the-line customer service.

## Relationship You Can Count On

Our goal is to become your strategic business partner - a supplier you can trust and count on for consistency in products and services. We are a partner you can rely on to get your products done right every time.

## Experience and Product Knowledge

Need a recommendation on what type of printer or label to use in a certain application? We have been in the barcode marketplace since 1975 and are experts in barcode printers and scanners.

## On-site Repairs and Troubleshooting

We offer certified on-site service for your barcode problems, repairs, and troubleshooting. You can count on Imprint to get you out of a jam.

## Emergency Stocking Programs

Having a hard time managing your label or ribbon inventory? Our warehouse is your warehouse. We offer emergency stocking programs that give you a back-up plan and prevent any out of stock issues with any of your barcode labels and ribbons.

## Elite Status

Imprint is a premier partner with industry leaders such as Zebra and Honeywell. We get the best pricing and program offers, which we in turn offer to you.

## “Green” Products

For companies that have a green initiative, Imprint carries the only environmentally friendly solvent free ribbon in the marketplace.

## Unique Programs

Imprint offers cutting edge programs to keep your prices low and offer you the most flexibility.

- a. Zebra and Intermec Trade-In Program: Take advantage of the “Cash for Clunkers” on printers while the money is on the table.
- b. Imprint’s Refurbished Hardware Offering for your barcode printers and scanners. Buying refurb hardware vs. new can save your company considerable money.

## Digital Custom Labels

Make an impression on your customers. Imprint is one of a select few label companies to own HP Indigo presses. Digital printing allows you to have your labels done in high-definition without the included high price.

# About Imprint Enterprises

Imprint Enterprises has been in business since 1975 and is focused on providing customers the highest quality products with the most comprehensive service. Whether you're looking to purchase new barcode equipment and supplies, or need best-in-class installation and service for your barcode products, we have a solution for you.

We specialize in nationwide barcode printer service, site surveys and end-to-end barcode solutions. Imprint's Barcode and Custom Labeling Division focuses on the following industries: manufacturing, distribution, logistic centers, food processing, co-packagers, beverage, and pharmaceuticals.

## Excellent Service

At Imprint, dedicated sales representatives help you find the best solutions and strategies to improve your bottom line. In conjunction with your dedicated sales representative, inside account representatives are available to immediately assist you in following-up on an order, gathering additional information, assisting you on a quotation or insuring your orders will always be expedited quickly and painlessly.

## Customers

We have worked with a variety of distinguished clients in a number of industries, delivering nationwide sales and service to SMBs and Fortune 500 companies. With pre-sales technical engineers, deployment and installation services, free level one technical support, and depot and on-site service contracts, Imprint Enterprises has the expertise to keep customers satisfied.



# Barcode Printers

For 20 years, Imprint has been the leader in on demand label printing. We offer full barcode printing solutions to customers, helping them find the perfect printer for each application, as well as the ideal software and labels needed to get the job done.



## Printers

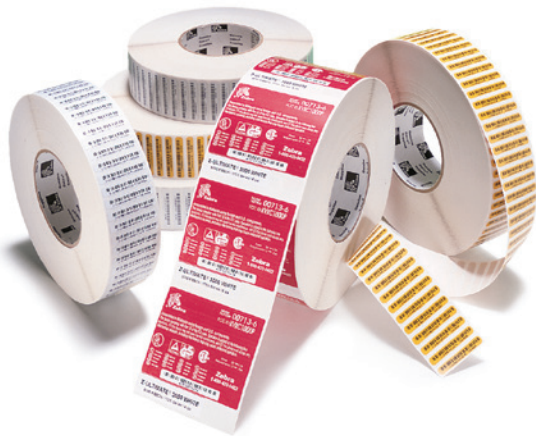
### Premier Authorized Reseller

- Zebra™
- Datamax™
- Intermec™
- Sato™
- Godex™
- Printronix™
- TSC™



## Label Generation Software

- Bartender™
- Nice Label™
- Teklynx™
- Installation & Custom Integration



## Stock Labels

- Genuine Zebra™
- Datamax™
- Intermec™
- Sato™
- Manufactured Nationwide
- Over 750 Stocked Labels on the Shelf
- Same Day Shipping
- Synthetic Labels
- RFID Tags
- Genuine Checkpoint and Sensormatic

# Imprint Top Picks – Barcode Printers

Although we offer a wide range of barcode printers from some of the best manufacturers in the industry, our customers have chosen four from Zebra technologies that stand out.



## **XI Series Industrial Printers**

- Rugged steel housing and metal interior perfect for demanding environments
- Incredible print speeds perfect for print-and-apply lines and batch printing
- Designed to function 24/7, so you can maximize uptime
- Ensures ideal print quality thanks to built-in diagnostic tools



## **ZT420 Industrial Printer**

- Easy to use LCD graphical user interface
- Open operating architecture provides optimum flexibility for businesses
- USB host port for intuitive printer configuration
- Metal frame and media cover provide extra durability



## **QLn Series Mobile Printers**

- Rugged, drop-resistant mobile printers that work in any environment
- Eliminate lost productivity with a smart battery that indicates power and health levels
- Improved communication with industry-leading handhelds
- Boost efficiency with the large display and impressive printing speeds



## **ZQ500 Series Mobile Printers**

- Lightweight, military design can withstand shock, vibration, and temperature exposure
- Received an IP54-rating for resistance to liquids and dust
- Secondary Bluetooth communication channel that allows multitasking
- A simple user interface that greatly reduces mistakes

# Barcode Software/ERP Integration



Imprint Enterprises offers industry-leading barcode software and automation solutions that meet the needs of any business. Our partnerships with leading barcode label software companies, like NiceLabel and Seagull Scientific, allow us to provide best-in-class label generation and automated label printing solutions for any size business.

## The Benefits of Barcode Label Software

- **Custom Labels:** With built-in templates, you'll be able to quickly create custom labels, tags, badges and coupons.
- **Simplify Tracking:** With continued serial numbers, you won't have to remember the last serial number used. It automatically keeps track, preventing gaps and mistakes.
- **Eliminate Errors:** Creating barcodes with barcode software prevents manual data entry, which often causes mistakes. Connecting your barcode software to your product database makes entry even easier.

## Integrate with Your Existing ERP Software

Barcode ERP integration links printer operations with other supply chain management and ERP solutions to improve efficiency across your operations. Imprint Enterprises' barcode label printing solutions are compatible with most well known ERP software providers for a total solution to fit your business.

# Barcode Label Printing Software



Imprint offers businesses industry-leading barcode software and automation solutions that improve productivity and increase efficiency. Let us assist you in deploying your next application. With over 40 years of experience, our team of experts can design a custom application that fits the exact specifications your business requires.

## Integrated Label Printing

Integrate label printing operations with your supply chain management or ERP solution to improve efficiency, accuracy, and reliability.

## Label Printing Automation

Label printing automation solutions that greatly improve the efficiency of an enterprise's operations.

## Barcode & Automation Software

Industry-leading barcode software and automation solutions designed to meet the needs of any business.

*Imprint has developed partnerships with some of the most trusted barcode label software options in the industry, including:*



## NiceLabel

Professional barcode label design and printing software that also supports thermal transfer printers, databases, and offers open connectivity.

## BarTender

Software from Seagull Scientific that helps organizations create/automate barcodes, RFID tags, labels, and more to improve efficiency and security.

# Color Printing

We have partnered with companies like Cab and Epson in order to offer top of the line color printing options to our customers. These printing solutions are ideal for GHS label printing and other compliance label requirements. Imprint has helped companies in a wide variety of industries comply with the latest industry requirements.



Epson C3500

Cab XC Series

## Cab XC Series

The Cab XC series features two thermal transfer printers that have the capability of printing two colors on a label at the same time.

- Meet the conditions for the GHS standard
- Can handle 300 mm diameter label rolls
- Durable metal housing
- Support for peripherals

## Epson C831

This inkjet printer is built with industrial-strength materials and is the perfect match for applications that require GHS labels.

- Can print large format GHS labels for drum and chemical labeling
- Reaches print speeds of 3.6 inches per sec.
- Guarantees over 600,000 high-quality prints
- High-capacity ink cartridges

## Epson C3500

The Epson C3500 prints durable, high-quality labels that increase the efficiency of business operations and minimize the cost of labels.

- Compact, yet sturdy design
- Can print up to 4 inches per sec.
- BS5609 certified
- Four-color inkjet printing

## Epson C7500

The C7500 offers best in class endurance and dependability when it comes to color label printing.

- Rugged design is ideal for extreme environments
- Prints durable labels that won't fade or smear
- Integrates seamlessly into existing workflow
- Minimizes user intervention and waste

## Epson C7500G

The C7500G is ideal for those who value print quality and frequently utilize glossy media.

- Offers consistent and reliable printing
- Reaches print speeds of 11.8 inches per sec.
- Intuitive setup and integration
- Eliminates label waste and reduces label inventory



We have partnered with companies like Cab and Epson in order to offer top of the line color printing options to our customers. These printing solutions are ideal for GHS label printing and other compliance label requirements. Imprint has helped companies in a wide variety of industries comply with the latest industry requirements.



## Chemical/GHS

We offer a combination of color printers and labels that allow customers to efficiently create durable GHS labels that meet OSHA standards.



## Food

Whether you are in need of custom food labels, ingredient labels, or nutritional labels, Imprint Enterprises has the color printing expertise to deliver the perfect solution.



## Beverage

We leverage quality materials to create durable color printed labels, preventing images and text from running, smudging, or peeling.



## Medical/UDI

Our color printing solutions make it easy to print the labels your business needs as well as keep up with UDI compliance requirements.

# Applicators

At Imprint, supporting our customers before, during and after the sale is paramount. Our design and management team will aid you through the design and engineering phase of each project through the final system set-up and certification. From semi-automatic applications to the most demanding high speed, high accuracy labeling solutions, we understand your needs. More importantly, we understand how to convert your needs into successful production!

## Application

### Stock Systems

- 360
- 360A
- 3600 Print and apply



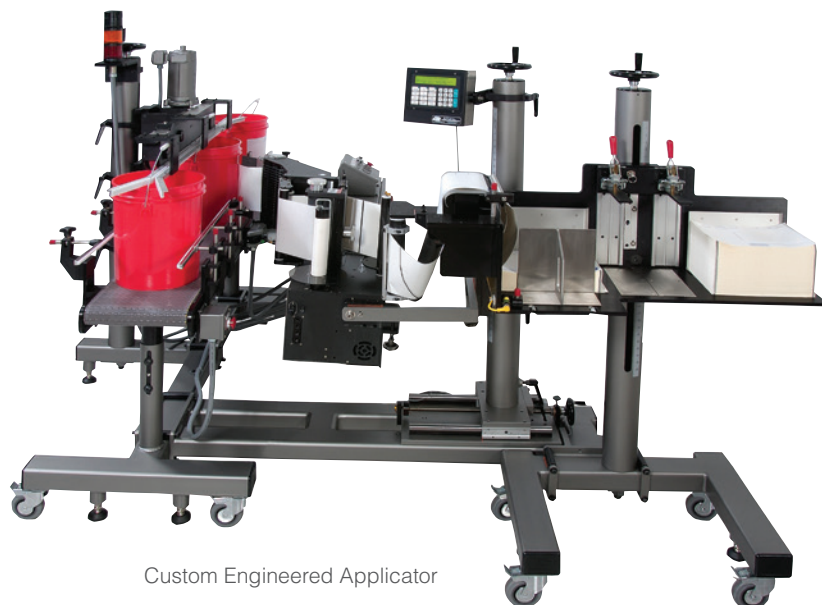
Stock Applicator



Print & Apply Applicator

### Custom Systems

- Conveying
- Application
- Diverting
- Sensors



Custom Engineered Applicator

## In-Line Systems

Imprint carries a full range of in-line coding systems. We carry small character inkjet, large character case coders, laser systems, as well as in-line flexible packaging printers.



### Small Character Inkjet: Continuous Inkjet

- High Speed
- Reliable
- Easy to Maintain



### Large Character Case Coders: Drop On Demand

- Barcode Capable
- Reliable and Easy to Maintain



### Flexible Packaging Printers & Ribbons: Thermal Transfer Overprinters

- Prints Directly on Films
- No More Messy Liquid Ink
- Easy to Use Supplies

# Barcode Printer Repair

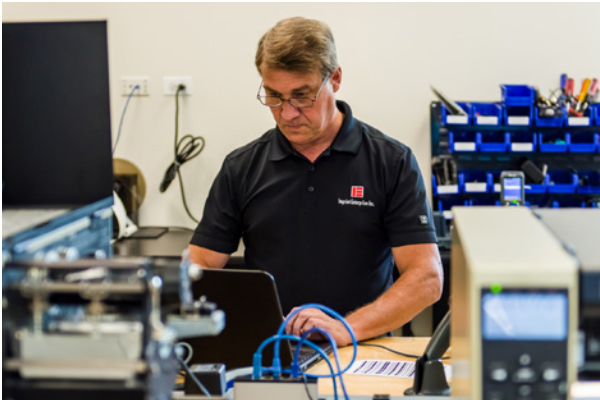
Protect your printer hardware with per instance time and material and depot service contracts, or annual service plans from Imprint Enterprises. In the event of malfunction or breakdown, service options serve as “insurance” for your equipment, minimize downtime, and save you money. Complete repair security provides peace of mind for your business.

Our certified technicians are experts in barcode printer repair and excel at helping customers choose the service level that is most economical and maximizes uptime. Imprint’s barcode printer repair services exceed industry standards and specifications, so customers know how committed we are to the repair process.

*“Our 10+ years of business with Imprint has been spectacular. Pricing is spot on with the industry, the service techs are fast, efficient, courteous and professional, and our sales reps are top notch. I would recommend using Imprint for hardware sales, printer sales, and especially service needs for any make or model printer.”*

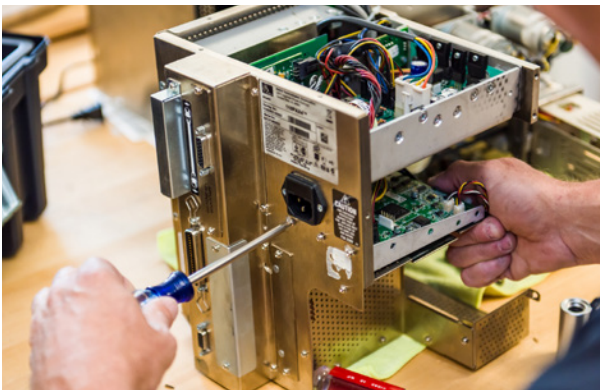
– S.F. with a Chicagoland candy company





## Time and Material

- 24-48 hour responsive time
- No contract needed
- On-site service throughout the USA, Canada, and UK
- A “pay as you go” approach



## Depot Service

- Repairs performed within 48 hours of approval
- No contract needed
- Depot service throughout the USA, Canada, and UK
- Logic board repair (component level) available



## On-Site Service Contract

- 24 hour call center
- 9x5 or 24/7 contracts
- Guaranteed same day, 24 or 24-48 hour arrival contracts
- Parts and travel included in contract
- On-site service throughout the USA, Canada, and UK

# Barcode Ribbons



We ensure you get quality printouts with high quality barcode ribbons for any application. We offer a wide variety of barcode ribbons to fit any printer. Whether you need wax, wax-resin, or resin ribbons, we have a solution for you. If you aren't sure what ribbon is best for your application and fits in your printer, our barcode experts can help you select the quality product you need.

## We offer three types of thermal barcode printer ribbons:

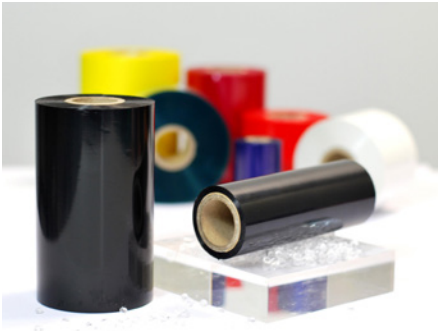
- **Wax Ribbons:** Wax ribbons are best for printing on paper labels that need to last and abstain from moisture, oils or other chemicals that would dissolve the wax image. These barcode ribbons are commonly used for printing shipping labels, carton labels, and retail bags. They work well in high speed printers.
- **Wax-Resin:** Wax-resin ribbons are more durable than wax ribbons against water and chemicals, and create a finer image on smooth, coated paper, synthetic, or colored labels. The increased resin in these barcode ribbons makes them smudge and smear-proof.
- **Full Resin Ribbons:** Full resin ribbons work best with synthetic label materials and are extremely durable against chemicals or heat. In addition to being waterproof, these barcode ribbons are grease, chemical, and solvent resistant. Resin ribbons must be used with polyester and synthetic labels.

## Printhead Protection Program

Businesses that use Zebra barcode printers may qualify for free printhead replacement. If you use Zebra Genuine Supplies exclusively, Zebra will replace old, worn-out printheads. The high-quality supplies from Zebra will reduce unnecessary wear and tear on your barcode printer.

# Imprint Top Picks – Supplies

Selecting the ideal barcode supplies for your business can sometimes be overwhelming, but our customers have determined that supplies from ARMOR and Zebra are some of the best in the industry.



## ARMOR Thermal Transfer Ribbons

- **Wax Ribbons:** Wax ribbons from ARMOR are ideal for a wide range of label materials, are suitable for coated and vellum papers, and tend to be the most economical solution.
- **Wax/Resin Ribbons:** Their wax/resin ribbons are ideal for premium applications because they produce high-quality results, are smudge-resistant, and the backcoating tends to be extraordinary.
- **Resin Ribbons:** These resin ribbons are best utilized for the most demanding applications because they are extremely resistant to smudging, high temperatures, and solvents as well as detergents.



## Genuine Zebra Media

- Genuine Zebra labels are all pre-tested for ensured quality, utilize consistent materials and processes, and meet the needs of most applications and budgets.
- These labels come in rolls that are easy to install and offer plenty of space for customized label designs and standard shipping labels.
- Perfect for black, high-contrast, or visible light images and cold temperature applications.
- Zebra ribbons



# Stock Labels



Imprint's stock barcode labels are available and ready to ship – many on the same day – to meet your traceability needs. Our stock barcode labels can be used for general track and trace needs, marking shipping boxes, or identifying retail items and their prices.

We provide a variety of sizes, colors, and material types for a variety of applications, including small warehouse settings and large industrial facilities. We have experience creating labels for the most demanding warehouse manufacturing environments, including chemical, food, medical, beverage, pharmaceutical, and more.

Imprint offers 750 different types of stock labels from industry leaders. Whether you need quality thermal transfer, direct thermal, synthetic, or RFID labels, we have them in stock and ready to go. Plus, our stock barcode labels meet or exceed OEM standards.

*"From beginning to end, the ordering process is simple, fast and painless. Imprint's great customer service, consistent products and fast shipping have allowed us the flexibility and efficiency to meet and exceed our customers' demands while remaining competitive and successful in our industry."*

– Jaime C. at a large food processing facility in Columbus, Ohio





# Direct Thermal and Thermal Transfer Barcode Labels

Our stock barcode labels are available using two common types of barcode labeling technologies:



## Direct Thermal

- Direct thermal labels are printed with a printhead that applies heat to a chemically treated label material passing over the printhead. The heat causes the label material to darken in the proper spots, producing an image.
- Barcode labels of this type are inexpensive, but they are typically for temporary use since they degrade when exposed to heat, light, or chemicals.
- Although direct thermal labels can be printed without the aid of ink or ribbons, they can only print in black and white and don't produce high quality images.



## Thermal Transfer

- Thermal transfer labels are used with a wax or resin ribbon to print images and provide a durable label. Heat causes the wax or resin to bond to the thermal transfer label.
- These labels offer a higher quality print, last longer than their direct thermal counterpart, and are often resistant to harsh environments.
- Although a ribbon is required for these labels, they can be printed in a variety of colors.

# Prime Labels



## Prime Labels for Finished Goods

*Let your finished goods stand out with Imprint's pressure sensitive labels.*

Imprint's reputation for quality, attention to detail, craftsmanship and outstanding service has been recognized by the greatest household brands for almost two decades. Imprint delivers customized prime label solutions through its unique combination of flexographic and digital offset printing technologies. By employing multiple printing technologies, Imprint can service all of your prime label branding needs, no matter the size or design requirements of the brand.

To support these printing technologies, Imprint has a dedicated and experienced team eager to understand your needs and help you exceed your prime label branding goals. The Imprint team supports your project at every step, from initial design through prime label application.



## Finishing Processes

- Embossing
- Hot Stamp
- UV Varnish
- Estate 4, 5, and 9
- Eggshell Wet Strength

# Choose the Labeling Solution Your Business Needs

*Our combination of quality, attention to detail, craftsmanship and outstanding service make us the best choice for your prime label branding needs.*



**Beauty Labels**



**Healthcare Product Labels**



**Beverage Labels**



**Water Bottle Labels**



**Dissolvable Labels**



**Wellness Product Labels**



**Food Product Labels**

# Facility Products



At Imprint, we know that warehouses, distribution centers and manufacturers have high demands for clear organization and efficient labeling systems. We offer a wide variety of labels and ensure that our customers get complete, customized solutions for all of their facility labeling needs. From the initial consultation to the installation, we'll work with you to create facility labels that are specifically designed to meet the needs of your business.

- **Warehouse Rack and Bin Labels:** Whether you need cold storage rack labels, magnetic rack labels, cover-up rack labels or polyester rack labels that are longer-lasting and more durable than traditional paper rack labels, you can find what you need for your application, at a competitive price, and available for quick shipment.
- **Floor Labels and Kits:** Our durable floor labels and kits provide safe and reliable location marking for your facility. You can place a floor label anywhere it's convenient, and changing a label is as simple as popping it out of the frame and inserting the new one.
- **Warehouse Magnets:** Imprint offers warehouse magnets for any application you can imagine. Constantly changing labels in your warehouse can be difficult and often leaves behind sticky remnants of the adhesive. Warehouse magnets provide a temporary or adjustable solution for your application.
- **Long Range Retro Reflective Labels:** Long range retro reflective labels are coated with a polyester-based material, blended with microscopic glass beads that reflect the scanner's laser, much like a mirror. This reflective material enables your current scanners to reach much greater distances—as far away as 50 feet!

# Warehouse Labeling

## Warehouse Signs

*Imprint offers a variety of warehouse signs for warehouse location and long range scanning purposes.*

To keep your warehouse running at peak efficiency, you need to ensure your staff can quickly navigate your facility with highly visible warehouse signs. Whether you're in the early stages of implementing a WMS system or upgrading an existing facility, hanging warehouse signs can be engineered to fit your building design and improve your picking, packing, and shipping operations. We offer everything from warehouse aisle signs with polyester or retro-reflective labels for a professional appearance, bent warehouse signs for ultimate visibility, and flat warehouse signs as a fast, inexpensive solution. Imprint can guide you to the solution that works best for your facility.



**Hanging Signs:** For those warehouse locations that are difficult to label, such as bulk floor signs or aisle identification signs, we can custom design a hanging placard or aluminum sign that best meets your unique application.



**Bent Signs:** No matter what your scanning requirements are, we will assist you with a sign or label combination that will enable you to work around high ceilings, narrow aisles, and poor lighting conditions to ensure reliable data collection and tracking.



**Flat Signs:** Flat signs are inexpensive, easy to mount, and can be manufactured with a custom long range barcode label and delivered to your location in a short time – regardless of the desired quantity.



**Aisle Signs:** Imprint will assist you in designing a custom warehouse aisle sign that will set your facility apart. You can customize the right combination of polyester or retro reflective label materials, barcode type, lettering, color tabs, and mounting applications.

# Power Carts

Increase your overall employee and facility productivity by converting a stationary workplace to mobile without major changes to your software, infrastructure, or processes. Empower your employees to access valuable data from anywhere in the facility using mobile workstations. Imprint can customize mobile powered workstations to suit your specific needs with our growing line of modular accessories.

## Compact RC Series

The most economical, compact cart system, the RC Series continues the modular concept of other power carts creating a full workstation solution.

Features include:

- Economical and compact workstation solution
- Powers laptop, printer, and scanners for up to 8 hours
- Easily integrated with a number of optional accessories
- Small profile makes it easily moveable within any facility

## Mid-Range NB Series

The NB Series mobile powered workstation was developed to provide true mobility anywhere in a facility.

Features include:

- Rechargeable power with ability to run 4 devices at once for 8-12 hours of normal use
- Adjust shelves in seconds on the slotted upright system
- Compatible with the Power Swap System, which offers hours of extra power with minimal downtime
- Easily integrated with a number of optional accessories

## Heavy-Duty PC Series

The PC Series mobile powered workstation has been designed to hold and power a variety of equipment, and it also provides generous space to hold inventory.

Features include:

- Rechargeable power with ability to run several devices at once for 8-12 hours of normal use
- Heavy-duty model with weight capacity of 500 lbs and plenty of shelf space for inventory
- Also available with 48" shelves
- Easily integrated with a number of optional accessories



Heavy-Duty PC Series

# Automated Packaging Systems



PaceSetter PS 125™

## Order Fulfillment Systems

### Baggers & Bag Printing

- Integrated and customizable printing and packing systems
- On-demand bagging
- Bag printing
- High-speed and automated options available

## Protective Packaging

### AirPouch® Express 3™

Produces AirPouch air pillows

- Compact
- EZ-Tear™ perforations



AirPouch® Express 3™

### AirPouch® FastWrap™

Produces bubble on-demand and tubes

- Highly flexible
- Compact
- EZ-Tear™ perforations



AirPouch® FastWrap™

### EarthAware Media

An environmentally responsible approach to consumables

- Bags
- Pillows
- Tubes
- Bubble on-demand

## Custom Integration

We'll design and build custom:

- Bagging systems
- Feeding and accumulation for protective packaging systems

# Barcode Scanners



## 1D and 2D Barcode Scanners

*True enterprise mobility starts with capturing data in real time, at the point of business activity, with accurate and reliable barcode scanning hardware.*

Barcode scanners have undergone a tremendous evolution over the past decade. Scanners are no longer a “one size fits all” solution; a wide range of both laser and imaging scanners are available for reading an array of 1D and 2D barcodes in retail, warehouse, delivery, healthcare, sales, and other applications. Imprint Enterprises offers the industry’s most robust and innovative line of handheld, fixed-mount, and machine vision 1D and 2D barcode scanners that can help you improve efficiency, save time, and minimize errors in any environment.



Honeywell Granit 1911i

### Handheld Scanners

Handheld barcode scanners are a critical component of any automatic data collection solution. Imprint’s selection of handheld barcode scanners includes both wired and wireless devices that can provide standard range, near-range, and long-range scanning capabilities.





Honeywell 7820 Solaris

## Fixed-Mount Scanners

Our line of fixed-mount barcode scanners provides ergonomic scanning for retail POS, shipping/receiving, manufacturing, conveyor lines, and other applications. We provide scanners from leading manufacturers in a variety of sizes and configurations, including laser and imaging scanners.



Cognex In-Sight 5000

## Machine Vision

Imaging-based machine vision scanners can automatically extract desired information from digital images or barcodes on a conveyor system or assembly line. We provide solutions from leading manufacturers that can be used for label inspection, packaging inspection, and other applications.



Cognex DataMan 8600

## Verification

Imprint also offers a line of barcode verifiers that can help ensure your printed barcode labels meet the necessary compliance standards. Our verifiers provide the necessary compliance checks as well as 1D and 2D barcode verification with reporting.

# Mobile Computers



## Mobile Terminals and Computers

*Mobile computers and terminals are a vital component of any wireless infrastructure because their mobility and ruggedness allow them to be taken wherever employees need to go.*

They are also ideal for collecting data, accessing customer information, and completing business transactions at the point of activity. Imprint Enterprises' experts can recommend the right barcode terminal or scanner for your application and environment. Our line of rugged mobile computers includes traditional keypad handheld computers, rugged tablets, wearable computers, wireless Android devices, and vehicle-mount devices.



From left to right: Motorola MC9200, MC3090 and MC3100

### Handheld Terminals

Our selection of leading handheld devices includes Motorola's MT2000 series batch computers, Honeywell Dolphin series computers, Motorola MC3100, MC65, MC75, MC-9000 series, and many others. These standard data collection terminals feature a variety of keypad configurations, support for multiple wireless technologies, barcode scanning and RFID capabilities, and other features.



Honeywell Thor VM3



Zebra Omnii XT15



Zebra TC8000

## Vehicle-Mount Terminals

We also offer an equally diverse selection of wireless and batch vehicle-mount computers, including popular lines like Honeywell's Marathon, VX, and Thor series, and Zebra's VC70 and VC80 devices. The rugged computers are available in full-screen and half-screen configurations, come with support for multiple operating systems (Win CE, Win 7), and offer a variety of mounting options. Imprint also provides mobile device management software for centralized support, along with full service and repair (both on-site and depot) for the computers.

## Industrial Rugged Computers

For the most extreme operating environments, we provide rugged terminals that are Intrinsically Safe (I-Safe) and are IP 65/67 rated against dust, moisture, and other contaminants. We also offer devices specifically designed for cold chain and freezer operations (with some models built to operate in temperatures below -22°F) and for applications in which workers move between cold and warm environments.

## Innovative Technology

The TC8000 Touch Mobile Computer from Zebra Technologies is the most efficient and feature-rich mobile computer in the industry. Designed to be lighter and more ergonomic than other mobile computers, the TC8000 helps make workers 14% more productive. This mobile computer features a touch screen with customizable keyboards, voice interaction, and hands-free proximity scanning, so worker efficiency is maximized. With an IP65 rating, the TC8000 offers the durability customers expect from a Zebra device.

# Terminal, Scanner & Printer Accessories

## Mobile Terminal and Computer Accessories

Imprint Enterprises offers an impressive collection of accessories for the industry's top mobile computers and terminals. These accessories provide additional functionality and durability to your current devices, improving the efficiency and productivity of your business operations.

- Antennas
- Audio accessories
- Barcode scanner modules
- Battery accessories
- Cables
- Carrying cases and accessories
- Chargers
- Cradles
- Headsets
- Imagers
- Mounts
- Mobile payment modules
- Power supplies
- Snap-ons
- Stylus

## Barcode Scanner Accessories

The accessories Imprint offers for barcode scanners greatly improve the productivity of your workforce. Our wide selection of barcode scanner accessories provides the features needed for any scanning application.

- Adjusters
- Battery accessories
- Cables
- Carrying cases and accessories
- Covers and protectors
- Customer-facing scanners
- Mounts
- Power supplies
- Scale displays



To learn more about our selection of accessories, contact an Imprint expert at 855-745-4464 or visit [www.imprint-e.com/shop-imprint](http://www.imprint-e.com/shop-imprint)

# Imprint Top Picks – Tablets



The market for durable enterprise tablets has grown significantly over the past few years. Although Imprint offers a collection of the industry's best tablets, the following two stand out the most:

## Zebra ET50/ET55



- Windows or Android OS.
- An extensive line of accessories that provide additional data capture features, better power management, and improved ruggedness.
- Support for Wi-Fi and 4G LTE, so these tablets work anywhere they are needed.
- Touchscreen works with a gloved or gloveless finger, as well as an active or passive stylus.

## Zebra ET1



- Designed to be sleek and attractive, while also offering the durability needed for extreme environments.
- Data encryption that meets industry and government regulations.
- WLAN or WWAN connectivity.
- Removable battery that can be swapped on the fly.

# Imprint Top Picks – Mobile Computers

Mobile terminals and computers are more important than ever before for enterprises. Although many manufacturers have made great strides in mobile technology, here are a select few that stand out.



## Basic — Intermec CK3x Mobile Computer

- Rugged enough to withstand multiple drops to concrete and has an IP54 rating against dust and moisture.
- The choice of a 2D near/far area imager or a 2D area imager for omni-directional scanning capabilities.
- Battery life that can withstand the rigors of a full shift.
- Voice enablement gives workers extra functionality.



## Rugged — Zebra Omnii XT15

- Comes with the choice of Windows CE 6.0 or Windows Embedded Handheld 6.5 operating systems.
- IP65 and IP67 sealing ratings mean the Omni XT15 can handle liquids, extreme environments, and drops to concrete.
- Ideal ergonomics allow workers to be more effective and efficient when in the field.
- 5000mAH battery offers up to 20 hours of use.



## Vehicle-Mount — Motorola VC80

- Comes with a variety of mounting options, so it fits in almost any vehicle.
- Several peripherals can be added easily to extend the VC80's functionality.
- The keyboard and touchscreen can be replaced in minutes, minimizing downtime in the event of damage.
- Real-time information and intuitive design boost worker accuracy and efficiency like never before.



## Vehicle-Mount — Honeywell Thor CV31

- Compact design that gives drivers 20% more visibility than similar vehicle mount computers.
- Ships with the Windows Embedded Compact 7 OS to take full advantage of Honeywell's robust hardware.
- An optional touchscreen defroster means the CV31 can be used in operations that utilize cold storage.
- Syncs up with a vehicle's ignition to conserve power and eliminate the lost productivity that stems from dead batteries.

# Imprint Top Picks – Barcode Scanners

Enterprise mobility is rooted in the ability to capture data in real time, in the most accurate and reliable way possible. Barcode scanners are essential to this process.



## Handheld — Honeywell Granit 1911i

- This IP65-rated device offers best-in-class durability, decreasing repair costs and maximizing uptime.
- Bluetooth connectivity allows the Granit 1911i to operate up to 100 m from base while also reducing interference with separate wireless systems.
- The lithium-ion battery is easily removable, and a full charge allows the device to perform up to 50,000 scans.
- Easily scan items that are out of reach and scan 20 mil linear codes from a distance of 75 cm without any impact on accuracy.



## Handheld — Motorola DS3578

- Aggressively scans high-density barcodes and is compact enough to fit in almost any enclosure in a variety of environments.
- The built-in diagnostic indicator greatly reduces downtime by offering intuitive troubleshooting.
- Can be configured and upgraded remotely, eliminating the expenses associated with on-site service.
- Powered through serial and USB ports, so there are fewer cables to clutter a workspace.



## Machine Vision — Cognex In-Sight 5000

- The die-cast aluminum housing is IP67-rated, making the In-Sight 5000 series the most durable machine vision scanners.
- Comes equipped with a library of proven tools to offer superior performance and reliability.
- Intuitive design makes it easier than ever to deploy machine vision applications.
- Easily integrates with a variety of accessories that offer additional functionality to the In-Sight 5000.



## Verification — Cognex DataMan 8600

- Designed to perform in a variety of environments, including even the harshest of factory floors.
- A cutting-edge liquid lens imaging system and flexible lighting technology make the DataMan 8600 ideal for DPM applications.
- Designed to support a variety of applications – corded or cordless – to meet any communication requirements.
- Robust barcode reading technology allows the DataMan 8600 to read codes regardless of damage, perspective, distortion, contrast, or obstruction.

# Terminal Accessories: Apple

Imprint Enterprises offers an extensive range of accessories so that customers can always find the right solutions for a particular industry or application. These robust accessories work seamlessly with your mobile devices, making it easier than ever to get the most out of your technology.

## Rugged iOS Scanner & Cases



### Linea Pro 5/6

The Linea Pro 5/6 from Infinite Peripherals adds barcode scanning and payment processing capabilities to Apple's iPhone 6, iPhone 5, and iPod touch 5.

- 1D/2D barcode scanner
- RFID reader
- Magnetic stripe reader
- Rugged design



### Infinea X

The Infinea X is rugged enough to protect Apple devices in a variety of extreme environments, making it ideal for healthcare, warehousing, or field services.

- 1D/2D barcode scanner
- RFID reader
- Hot-swappable battery
- Bluetooth compatible



### Infinea Tab M

The Infinea Tab M ruggedizes the Apple iPad mini, iPad mini with Retina display, and the iPad Air, while also adding additional functionality.

- 1D/2D barcode scanner
- RFID reader
- Magnetic stripe reader
- A variety of encryption methods



# Printer Accessories

Customers depend on Imprint Enterprises for accessories that increase the value of their printers, helping them last longer and perform better than ever before. Regardless of your printing needs, you'll find that we offer a comprehensive list of barcode printer accessories that optimize performance.

## Cutters

These are commonly used when printing with continuous media, as well as occasions where the die cut labels lack a perforated liner.

## Peelers

Peelers help separate the liner from the printed label, making it much easier to quickly apply the labels.

## Printheads

Printheads create the images applied to labels. Replacement printheads are vital to performance and reliability.

## Rewinders

These allow printed labels to be rewound after an initial pre-print. Then, the labels can be printed again with additional information.

## Platen Rollers


Platen rollers collect and feed the labels through the printer. Replacements help prevent paper jams and other issues.

## Catch Trays

For applications where the printed labels are not immediately removed, catch trays help keep them organized.

## Printer Enclosures


Printer enclosures protect printers from liquids, dust, and extreme temperatures, reducing maintenance costs and extending device longevity.



**Zebra's Printhead Protection Program**

Why worry about unexpected printhead replacement costs? Use genuine Zebra supplies exclusively, and all your failed printheads will be replaced at **no charge!**

→ [www.imprint-e.com/printhead-protection-program](http://www.imprint-e.com/printhead-protection-program)



# Wireless Networks

A robust wireless network is an essential tool for large and small businesses alike. In the past, quality wireless infrastructure was expensive and required extensive IT knowledge. Our partnership with Zebra has allowed us to eliminate this problem from your business. Zebra WiNG 5, designed for large and growing businesses, and WiNG 5 Express, designed specifically for businesses with fewer than 1,000 access points, make it easier than ever for you to reach your potential.



## WiNG 5

- Extraordinary scalability; deploy/manage up to 10,000 access points
- Unmatched network flexibility and site resiliency
- Gap-free security that protects your network and keeps your data safe
- Powerful centralized management and analytics

## WiNG 5 Express

- Start small and grow effortlessly
- Take advantage of the flexible deployment options
- Deploy your network in minutes, without any extensive knowledge
- Utilize powerful analytics and view the entire network

## Site Surveys and Installation

Imprint Enterprises offers customers comprehensive site surveys and develops plans with a tested and proven process. This process begins with a needs analysis, which is an initial assessment that accounts for your budget, any RFID compliance mandates, your compliance goals, and any other factors unique to your enterprise. The rest of the process includes a preliminary site survey to gain an understanding of the IT infrastructure and manufacturing processes and is followed by the construction of the wireless architecture and physical installation. Imprint also offers training from a real IT staff that is familiar with all aspects of wireless networking.

**Download Our Free Brochure:**  
The Top 5 Benefits of WiNG Express

→ [www.imprint-e.com/business-wlan](http://www.imprint-e.com/business-wlan)

In this day and age, a good amount of a business's technology relies on some sort of a wireless connection. Our customers have given us feedback on their wireless networking technology of choice.



### **AP 7522E**

Zebra's AP 7522E utilizes 802.11c speed in order to offer extremely reliable and high-quality wireless LAN to enterprises of all sizes.

- The AP 7522E is built with powerful radios that offer better results with fewer access points, and without any negative impact on speed or access.
- Comes with two built-in spatial streams and 256 QAM modulation, allowing it to handle even the most demanding of applications.
- The sleek design helps this device blend in with the surrounding environment, and the antenna can be internal or external depending on preference.
- For larger deployments, use Zebra's WiNG Express Manager to install up to 1,024 WiNG Express access points.



# Custom Applications



Imprint offers custom mobile application development for almost any vertical market or business application. Our team can also design and program responsive websites for the internet as well as applications for Android, iOS, Windows, and more.

Our offering also includes mobile strategy, UI design, and free consultations to assess application requirements. Trust us to provide complete solutions – including hardware, software, installation, and support – that are cost-effective and have a fast time to market.



## Consultation

Our free consultation will help you assess your business's application requirements. We'll help you outline a path to your goals, determining the time frame and resources necessary.

## Quality

We always ensure our solutions are top quality. We complete a thorough in-house review, including focus group testing.

## Mobile Strategy and UI Design

If an app isn't easy to use, it won't matter how powerful it is. We'll help you design a user interface that's simple, sleek and intuitive.

## Application Release/Deployment

We have the know-how to get your apps deployed—whether you want us to install the applications directly on your devices, teach you how to install them yourself, or load the software to app marketplaces for install later.

## Development Expertise

Our designers and programmers know HTML5 and responsive design, Javascript, AJAX, JSON, XML, C++, C#, Objective C, PHP, VB, MySQL, SQL Server, iOS, Android, Windows Mobile, Windows CE, responsive frameworks, mobile frameworks and more.

## Maintenance

We provide maintenance packages for both hardware and software, so you always have the most up-to-date solutions.

# Software Options

Imprint offers some of the most trusted off the shelf software options in the industry, like those from RedBeam and IntelliTrack. These off the shelf solutions make it easier than ever to keep track of inventory, manage your warehouse, and locate assets. These software solutions can support small, individual environments, large enterprises with automated infrastructures, and anything in between.



## **Inventory: RedBeam Inventory Tracking**

RedBeam's Inventory Tracking software allows businesses to streamline inventory processes and easily track the movement of inventory through the supply chain. Like all of RedBeam's software applications, there is a standard version as well as a mobile option. The standard edition requires the use of cabled barcode scanners attached to a workstation in order to collect data; the mobile version has this functionality, but also works with scanner-enabled mobile computers.



## **WMS: IntelliTrack Warehouse Management System**

IntelliTrack's WMS solution is available in batch and real-time radio frequency versions and is defined by its intuitiveness, affordability, and reliability. Right out of the box, your warehouse will benefit from enhanced inventory accuracy, a more productive workforce, and improved and more efficient customer service. IntelliTrack's WMS software also includes features like directed picking and put-away, wave management, cubing, and cross docking.



## **Check-In/Check-Out: RedBeam Check-In/Check-Out Software**

RedBeam's Check-In/Check-Out software is perfect for businesses that struggle to effectively locate files, equipment, tools, or any asset that frequently changes possession or location. The standard edition of this software works perfectly with almost any cabled barcode scanner, while the mobile version also works with mobile barcode scanners.

# Professional Services



Imprint Enterprises offers a full suite of professional services that were built to perfect solution performance and provide an improved ROI for customers. No matter which professional service option you choose, Imprint employs the most qualified support technicians in the industry, so any problems are solved quickly, installations are handled correctly, and questions are answered in a timely and informative manner.

## Break-Fix

*Imprint's most basic service plan is break-fix/depot repair, which allows the customer to ship broken equipment or devices to the service provider.*

If customers find that equipment is not working, they can contact Imprint and then send the items in question to their repair depot. The equipment is repaired in a timely manner and then shipped back to the customer. Break-fix support provides companies with a reliable, cost-effective method of device repair as well as a feeling of comfort knowing Imprint's experienced repair team is on the job. Imprint also offers annual on-site time and material contracts that allows customers to schedule a visit from one of their trained technicians.

## Consulting

*Imprint leverages almost 40 years of industry expertise to provide consultations for businesses and insight on barcode, labeling, and printing solutions.*

Whether your business is in need of barcode, labeling, and printing solutions as well as terminals, wireless infrastructure, and database design/data mapping from an ERP to an application, Imprint Enterprises can be your solution.

Our experienced service technicians have been tried and tested countless times, making them the best in the industry. If you would like to set up a consultation, contact us today at (855) 745-4464.

## Process Flow/Application Scope and Development

*An assessment of this type maps out devices, databases, systems, and more in order to identify an organization's most critical assets.*

This process greatly improves the efficiency of processes and leads to a more organized enterprise. Imprint's dedicated technicians conduct thorough asset inspections to ensure that each customer can meet – and surpass – their business goals.

## Wireless Site Survey

*Imprint leverages a tested and proven process to offer comprehensive site surveys and infrastructure planning.*

This process begins with a needs analysis, which is an initial assessment that accounts for your budget, any RFID compliance mandates, your compliance goals, and any other factors unique to your enterprise. The rest of the process includes a preliminary site survey to gain an understanding of the IT infrastructure and manufacturing processes and is followed by the construction of the wireless architecture and physical installation. Imprint also offers training from a real IT staff that is familiar with all aspects of wireless networking.

## Package/Label Design and Compliance

*Imprint develops custom applications to meet unique business needs and any industry/environment requirements, including GHS, UL/CSA, and customer compliance requirements.*

By employing a variety of printing technologies, Imprint can ensure that any size or decoration requirements are met. To support these printing technologies, Imprint has a dedicated and experienced team eager to understand your package or label compliance needs.

## Inventory Programs

*Imprint can house inventory for businesses with high-volume supplies orders, so they can have their labels when they need them.*



### **Corporate Office**

555 N. Commons Drive  
Aurora, IL 60504  
Phone: (800) 433-4512  
Fax: (630) 505-1511

### **Minnesota Office**

1408 Northland Dr. Suite 305  
Mendota Heights, MN 55120  
Phone: (800) 646-9099  
Fax: (651) 488-8664

### **Find Us Online**

[facebook.com/ImprintEnterprises](https://facebook.com/ImprintEnterprises)  
[twitter.com/imprintbarcode](https://twitter.com/imprintbarcode)  
[www.imprint-e.com](http://www.imprint-e.com)